

BODY BUILDER'S BOOK BULLETIN

DATE: June 23, 2009
MODEL YEAR: ALL
CHASSIS MODEL: ALL
BULLETIN NUMBER: BBB BULLETIN-13 (Rev. A)
(Discard previous Body Builder's Bulletin dated March 22, 2006)

AUXILIARY ELECTRICAL POWER SUPPLY

PURPOSE

To provide guidelines for the installation of auxiliary electrical power supply.

All incomplete vehicles manufactured by Nissan Diesel Motor Co., Ltd. conform to FMVSS 108 according to the terms and conditions stated in the Document for Incomplete Vehicle. It is the responsibility of the intermediate and final stage manufacturers to insure that the completed vehicle complies with pertinent FMVSS and other applicable federal, state and local requirements.

UD Truck electrical wiring size, switch and relay capacity is designed for the equipment already in the vehicle from the manufacturer.

AUXILIARY ELECTRICAL POWER SUPPLY

Recommendations:

- Direct battery supply: High amperage motors such as lift gates can be connected directly to the vehicle's batteries. However, a 3rd additional battery connected in parallel to the vehicle batteries is recommended.
- Engine driven units: Refrigeration equipment that has an engine driven compressor may be connected directly to the vehicles batteries.
- Self contained units: Refrigeration equipment with their own starting/charging systems must have an independent battery supply separate from the vehicle's electrical system.
- Battery junction box: For all other connections it is recommended to connect to the electrical accessory post in the battery junction box located on the vehicle at the battery box. See Figure A and B on page 2.
- Vehicle Wiring Harness: Do not splice into a wiring harness for a power source.

NOTE: Any new battery source should be protected with a suitable fuse and wiring size for the electrical load being installed. See Figure C on page 2.



Fig. A

On UD1200, UD1300 and UD1400 a useful junction box is located forward of the battery box.

LOCATION OF BATTERY BOX

(Covers removed for illustration purposes)

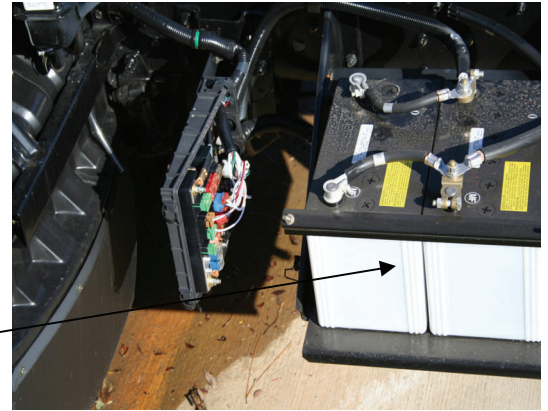


Fig. B

On UD1800CS and UD1800HD ~ UD3300 a useful battery junction is located in the junction box mounted forward of the battery box.

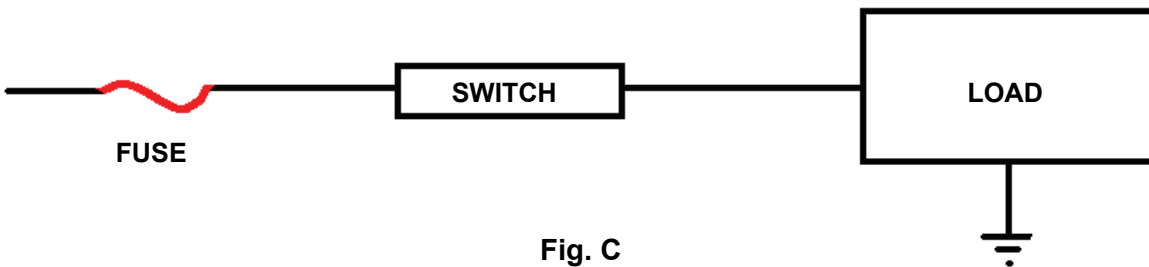


Fig. C

For additional information also see Body Builder Bulletins 5, 6, 14 and 16 for additional lighting and electrical information.

THE INFORMATION CONTAINED IN THIS BULLETIN SHOULD NOT BE INTERPRETED AS THE BASIS FOR WARRANTY CLAIMS UNLESS SO DESIGNATED